

EXTRAORDINARY IMPACT

THE CAMPAIGN FOR  PENN GSE



IMPACT REPORT

PENN GSE BOARD OF ADVISORS AND CAMPAIGN LEADERSHIP

2013-2021

The Late Madlyn Kornberg Abramson, ED'57, GED'60

Rajeev Amara, W'97^

Deborah L. Ancona, C'76, GED'77*

Paula W. Argosh, GED'82^

Olumoroti G. Balogun, GRD'20*

Mr. Brett H. Barth, W'93*+>

Joshua M. Berlin, W'95

Allison Jane Blitzer, C'91*

Wallace Boston, GRD'10*

Allison W. Brady, C'93

Harlan B. Cherniak, W'01*

Jolley Bruce Christman, GED'71, GR'87*

Lee Spelman Doty, W'76^

Beth S. Ertel, W'88, WG'92*

Mark S. Fife, W'78+

Jeffrey L. Goldberg, W'83, WG'89*

Emanuel A. Gonzalez-Revilla, W'88

Patricia Grant, GED'01, GRD'04*

Joel M. Greenblatt, W'79, WG'80*+

Wendy Marcus Greenfield, W'78^

Lisa Green Hall, W'87

Andrew Harris Jacobson, WG'93*

Marjie G. Katz, GED'90*>

John Katzman

Lois M. Kohn-Claar, C'88, GED'88*+>

Douglas R. Korn, W'84*

Elisabeth A. LeFort, C'76, GED'87

Gustave K. Lipman, W'94*>

Reina Marin, CW'72, GED'72

Jeffrey S. McKibben, W'93*>

Gregory A. Milken, C'95*>

Matthew Vincent O'Malley, GED'95, WAM'19

Scott G. Pearl, W'95

Andrea Jill Pollack, C'83, L'87, GED'17*+>

Jennifer S. Rich, C'92

David N. Roberts, W'84*+>

Francisco Jose Rodriguez, W'93*

Nancy H. Rothstein, CW'75

Molly P. Rouse-Terlevich, C'90, GED'00*

Jeffrey E. Schwarz, W'80, WG'81

Michael J. Sorrell, GRD'15*

Merryl Tisch

Navin M. Valrani, W'93, GED'18*>

Steven M. Wagshal, W'94*

The Late Edward M. Yorke, W'81+



What a wonderful accomplishment we have realized as a community during the *Extraordinary Impact Campaign*. We have raised over \$98 million towards Penn GSE's most crucial priorities, exceeding our \$75 million goal by 30 percent. First and foremost, thank you to all of the School's generous donors and friends for your generosity, for your commitment to Penn GSE, and for your dedication to improving opportunities for learners in our city, across the country, and around the globe. This campaign achievement and its transformative effect on the School would never have been possible if not for your partnership!

Extraordinary Impact raised more than twice what the School has ever raised in the past and enables us to construct a state-of-the-art building expansion with ample academic, student, and innovation spaces. The enhanced facility will allow our more than 1,500 students to experience the many joys of being together on campus. To surpass our campaign goal and be on track for this transformative expansion, with a groundbreaking slated for spring of 2022, would have been satisfying enough. It is especially gratifying to reach this milestone in the midst of unprecedentedly challenging times.

What matters most of all is how these numbers will enable us to achieve our mission. The funds we have raised are supporting our talented students as they go on to lead across all fields of education in all sectors, propelling groundbreaking research by our faculty, fueling innovative work by Catalyst and the Center for Professional Learning, and strengthening our partnerships with schools and communities.

As Doug likes to say, our collective endeavor can be compared to building a cathedral; the work has been challenging, but our shared sense of a greater mission has propelled us. What we have accomplished for education and for Penn GSE will impact the lives of millions of learners for generations to come.

We want to express our great gratitude to each of you for your dedication to Penn GSE and your support of the *Extraordinary Impact Campaign*. Our success could not have been accomplished without you. Thank you for your tremendous partnership.

PAM GROSSMAN

*Dean, Penn Graduate School of Education
George and Diane Weiss Professor of Education*

DOUG KORN, W'84

*Chair, Board of Advisors
Chair, Extraordinary Impact Campaign*

EXTRAORDINARY IMPACT

* denotes a current member of the Board of Advisors
^ denotes a member of the Development Committee
+ denotes a member of the Executive Committee
> denotes a member of the Space Committee



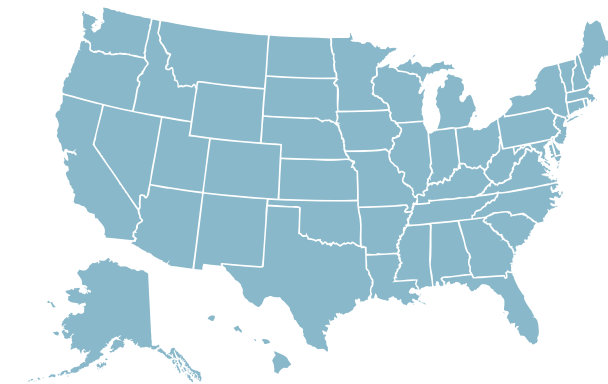
\$75M
CAMPAIGN GOAL

\$98,318,378
RAISED

4,133
DONORS

By the Numbers

The largest fundraising effort in Penn GSE's history, the *Extraordinary Impact Campaign* has been transformative in providing support for priorities across Penn GSE as part of the University-wide *Power of Penn Campaign*. *Extraordinary Impact* surpassed a key milestone when it met its overall goal almost a year early. When the campaign concluded on June 30, 2021, the School had surpassed the \$75 million fundraising goal by more than 30 percent.



52

U.S. STATES AND TERRITORIES
REPRESENTED BY DONORS



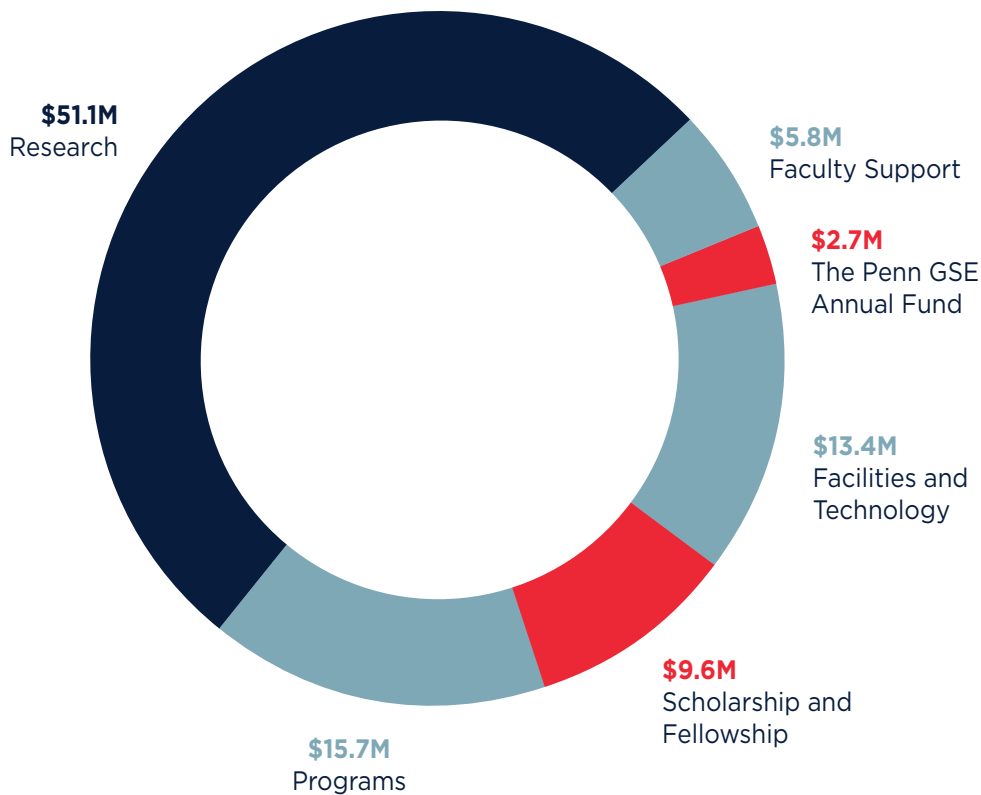
28

COUNTRIES REPRESENTED
BY DONORS

By Purpose

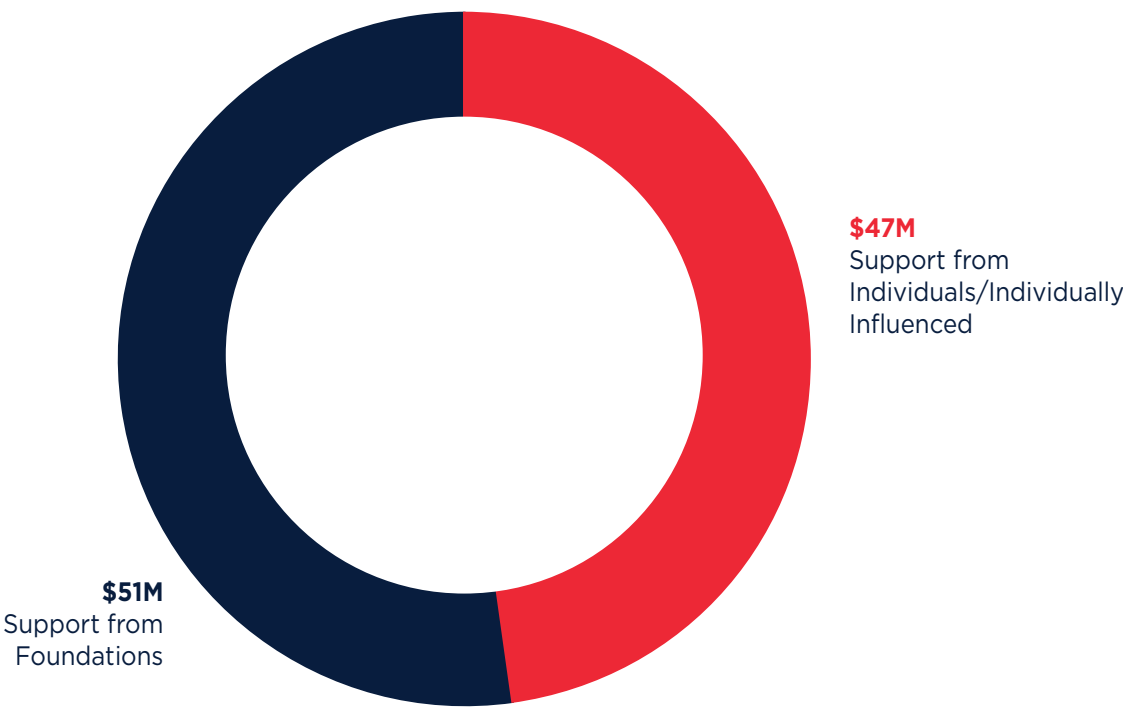
Extraordinary Impact has raised crucial endowment and expendable funds to support the School's people, programs, and activities. This support enables Penn GSE to provide scholarships and fellowships to our students, support our esteemed faculty, launch new initiatives, fund research, and transform the School.

Growth of Endowment During Campaign: 131%



By Source

One hallmark of the campaign was the way in which faculty and staff came together to advance a shared vision of Penn GSE's future, one at the forefront of expanding education's reach and boosting its effectiveness. Gifts to every part of the School counted for *Extraordinary Impact*. With support from donors across Penn's schools, units, and the broader community, the School surpassed its campaign goals.



Planned Giving and the Castetter Society

Gift planning supports Penn GSE’s work producing educators, leaders, and change makers who touch millions of lives through their commitment to education. By including Penn GSE as a beneficiary in their will, retirement plan, or life insurance policy, donors can leave a lasting impact on education, creating a legacy that will help prepare future generations of leaders across the field of education for centuries to come. We are proud to recognize those individuals who have remembered Penn GSE in their estate plans through membership in the William B. Castetter Circle of Legacy Donors, named for beloved longtime faculty member and former Penn GSE dean William B. Castetter, GR’48.

\$1.98M

PLANNED GIFTS





On the Road

Spanning Penn GSE’s Centennial celebration, Dean Grossman’s Unlocking Opportunity Tour, special *Extraordinary Impact* events, and more, events throughout the campaign brought together alumni and friends to connect and share in the School’s vision. The campaign has ensured that the School’s faculty, staff, students, and alumni can continue to reach learners locally, nationally, and globally and provide them with the foundation for lifelong opportunity. The pages ahead highlight the extraordinary work that your support has made possible.

- 87

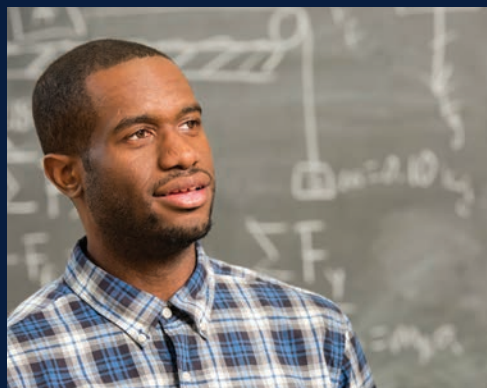
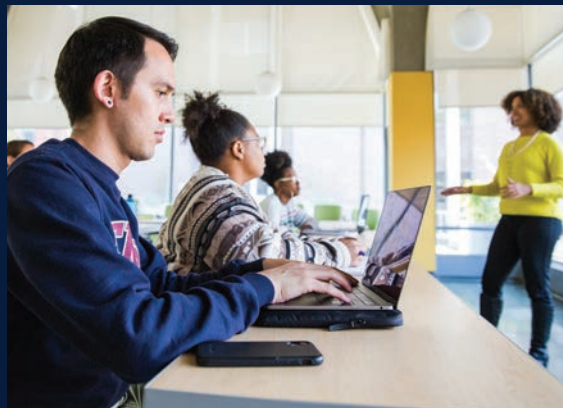
EVENTS
- 7,250+

ATTENDEES
- 17

CITIES AND VIRTUAL EVENTS
- 18,000+

PENN GSE ALUMNI LIVING IN 93 COUNTRIES





FACILITIES AND TECHNOLOGY



Thanks to the campaign, Penn GSE is undertaking a dramatic building expansion—the School’s first new construction in more than fifty years—to create a hub of twenty-first century teaching and learning. Penn GSE is the fifth-largest school at the University and one of the largest in terms of the number of graduate and professional students. The project will fulfill the dean’s vision of “One Penn GSE” by bringing the majority of the School’s programs, students, faculty, and staff into one state-of-the-art campus location. The expansion will connect the 3700 Walnut building to nearby Stiteler Hall and make the latter building fully accessible for the first time. A new main entrance on 37th Street will make GSE a visible gateway to the Penn campus and signify the importance of education to the mission of the University.



“ Penn GSE is broadly recognized as a powerful force for innovation across the educational landscape, with a long track record of advancements in teaching practices and in developing educational leaders. The building expansion will provide a beautiful home for Penn GSE in its second century and position the School to continue to play an important role in changing the lives of millions of people for the better through education.”

—DOUGLAS R. KORN, W'84
Chair, Penn GSE Board of Advisors and Chair, *Extraordinary Impact Campaign*

The building expansion will fortify Penn GSE’s longtime leadership in innovation and entrepreneurship by bringing Catalyst @ Penn GSE, the School’s hub for innovation, into a two-story academic innovation addition. With an innovation hub with a makerspace and media lab, five active learning classrooms, and a learning commons, the addition will provide flexible and technology-enhanced spaces where students will learn how to advance cutting-edge approaches in teaching and learning. Various other areas including a new lobby, flexible student lounge and study spaces, and an outdoor plaza will provide an enhanced experience of academic and professional community for the future’s transformational teachers and leaders.



“The innovative master’s and doctoral programs that serve working professionals are one of the primary distinguishers of Penn GSE, but these were the very students who often had to take classes off campus,” says Penn GSE Board of Advisors member Navin Valrani, W’93, GED’18, who graduated from one such program, the master’s in education entrepreneurship, and is enrolled in another, the Penn Chief Learning Officer doctoral program. “The vision of One Penn GSE is to bring everyone under one roof, where collaboration can take place like never before,” he says. “Everything will be revolutionary when it comes to this expansion project. It’s nothing short of wow.”

The images shown here are of a conceptual nature, illustrating the intended massing of potential additions and proposed scope of interior work. The final design of the addition and interior renovations will continue to develop and advance in future months in accordance with the program requirements and budget targets.

SCHOLARSHIP
AND FELLOWSHIP



Recruiting the strongest and most diverse student body possible is an evergreen priority at Penn GSE. During the campaign, the School made a Penn GSE education more affordable by initiating need-based aid for the first time. In addition, Penn GSE was able to increase financial aid offerings to master’s students by approximately 44 percent over the past three years and expects to grow these awards with an additional \$3.25 million committed and designated for scholarship. This increased support brings the most promising future educators and leaders to the School regardless of their ability to afford a Penn GSE education, advances the School-wide priorities of access and inclusion, and provides apprenticeships that are critical to faculty research. With this support, students from a variety of backgrounds can pursue their passion for education at Penn GSE and go on to have an impact on communities near and far.



“Our nation faces shortages of teachers and leaders, and the salaries of those professions do not support significant student debt. Our increased support for students is essential to create an inclusive pipeline of teachers and leaders who have received world-class preparation for their careers at Penn GSE.”

—DR. PAM GROSSMAN
Dean, Penn GSE

Tina Fletcher came to Penn GSE to earn her Ph.D. in education policy so that she could amplify her impact on education in her home state of Arkansas. “I call myself a cheerleader for teachers,” she says. “I tell community leaders and policy makers and elected officials all the time—if you want to improve your community, if you want people to choose to come and live in your town, if you want to fix your schools, start with your teachers.” Fletcher is grateful to be a recipient of the Gregory and EJ Milken Foundation Endowed Scholarship. “Thanks to your generous support, I am able to accomplish my lifelong dream of earning a Ph.D. with the hopes of improving education throughout the nation,” she says.



Recent higher education master’s program graduate Michael Onuchovsky, GED’21, aims for a career in higher education leadership. As a Penn GSE student, he found opportunities to lead at both School and University levels, serving as Penn GSE student government president and a representative to Penn’s Graduate and Professional Student Assembly. “I aspire to build meaningful and purposeful community on college campuses by fostering a positively engaging, intellectual culture,” he says. Onuchovsky is grateful to be a recipient of the Agnes Mulroney Scholarship. “Thank you very much for the opportunity to attend this amazing institution,” he says. “The Higher Education program has been extremely rewarding, and I can’t envision myself anywhere else.”

PROGRAMS AND RESEARCH



The campaign has fueled Penn GSE's programs in university-community partnerships and educational innovation and propelled the School's research in teacher learning, educational policy, race and racial literacy, and the learning sciences. Through the Office of School and Community Partnerships, Penn GSE has bolstered its partnership with The School District of Philadelphia, adding comprehensive partnerships in math and summer learning to the School's array of programs at more than 200 schools. Catalyst @ Penn GSE, the School's hub for innovation, generates powerful conversations and training across sectors to spark change in the field and deepen practitioners' knowledge. The research of Penn GSE faculty is reinventing teacher education, shaping policy to improve educational efficacy, studying the relationship between race and educational access, advancing racial literacy, and improving student outcomes through the learning sciences.



“When we teach racial literacy to young people, it's exciting to see how they take it in directions we didn't always plan. If they get the skills to speak up, they use their voices like a superpower, and what they do with it extends beyond our imagination.”

—DR. HOWARD STEVENSON
Constance Clayton Professor of Urban Education
and Professor of Africana Studies, Penn GSE

Penn GSE has become a powerhouse for research in teacher learning. Through grant support, faculty are advancing knowledge of how teachers can best gain the skills to facilitate student-centered, active learning in literature, math, science, history, social studies, and digital literacy. “Student-centered teaching is a difficult thing to learn,” says Penn GSE Assistant Professor Sarah Schneider Kavanagh, whose work includes helping teachers learn in team settings. “Having other teachers around you who are trying to do the same thing can help you feel safe enough to keep going.”



Each year, faculty and students across Penn GSE facilitate a multitude of programs at more than 200 Philadelphia schools in areas including mental health support, coding, and journalism. The School's Office of School and Community Engagement (OSCE) tracks these activities and steers the development of comprehensive partnerships that bring together University programs and services in response to community needs. These partnerships include research-based professional development for improving math instruction at fourteen elementary schools and a summer learning program to re-engage students and prepare them for the return to full in-person learning in the wake of the pandemic. “We work by listening to the schools and communities, learning alongside them, and connecting them with resources at Penn GSE,” says Dr. Caroline Watts, OSCE director and senior lecturer.

FACULTY
SUPPORT



Faculty represent the very heart of the School. They drive research, cause the most promising applicants to choose Penn GSE, and mentor the next generation of education professionals. For all of these reasons, the School makes it a top priority to recruit and retain the strongest and most diverse faculty that it can. During the campaign, Penn GSE established four new professorships, significantly increasing support for faculty. Professorships play an essential role in the research capacity of the School, providing recipients with the freedom to pursue promising new areas of research that may not yet be recognized by outside funders. Professorships also provide resources for faculty to undertake book projects, present at conferences, and convene scholars to propel significant conversations in education. Overall, professorships represent the most powerful way for the School to retain and attract the finest scholars.

Penn GSE’s Dr. Laura W. Perna, C’88, W’88, was named GSE Centennial Presidential Professor of Education during the *Extraordinary Impact Campaign*. Perna is also vice provost for faculty at Penn and executive director of AHEAD (Alliance for Higher Education and Democracy) at GSE. Perna has dedicated her career to studying how cost and other factors put college within or beyond reach for students, particularly those from underrepresented groups. “We need to recognize where students have come from, provide the support they need, and make the systemic and structural changes that allow all students to enroll and succeed in college,” she says. A national expert, Perna has testified before members of the U.S. Senate and House of Representatives, offering recommendations based on her research.



During the *Power of Penn Campaign*, the first Penn Integrates Knowledge University Professor with an appointment in GSE was named. Dr. Roberto Gonzales, a world-renowned scholar of the lives of immigrants in the United States, came from Harvard Graduate School of Education to Penn to be the Richard Perry University Professor, with joint appointments in the Department of Sociology of the School of Arts & Sciences and in the Literacy, Culture, and International Education division of GSE. The Penn Integrates Knowledge program is a University-wide initiative to recruit exceptional faculty members whose work exemplifies the integration of knowledge across disciplines and who are appointed in at least two schools at Penn.



“ Penn GSE has an amazing group of faculty colleagues doing absolutely essential work in a wide variety of areas in education. Faculty support translates into new lines of research, innovative teaching, exceptional mentoring of students, and most of all a scholarly community that makes Penn GSE an extraordinary place to work.”

—DR. MATTHEW HARTLEY
Professor and Board of Advisors Chair of Education, Penn GSE



PHOTO BY KEVIN BIRCH

THE PENN GSE
ANNUAL FUND



The Penn GSE Annual Fund supports every student, faculty member, and program at Penn GSE. Throughout each year, gifts of all sizes to the Annual Fund provide unrestricted funding. This is directed to areas of greatest need as opportunities arise. The result is an ongoing impact on student scholarship aid, partnerships with the local Philadelphia community, research, and faculty support. Examples include support for research across all areas of education, aid for student educators preparing to support students in underserved school districts, funding for a summer enrichment partnership program for K–8 students in West Philadelphia, support for Penn GSE students to undertake internships in developing countries, and sponsorship for educators from across the country to participate in Penn GSE’s professional development. With this support, Penn GSE can be responsive and flexible while advancing educational equity and social justice across the region, the country, and the world.



“Penn GSE is trying to shift the dynamic of the American education system and reframe how we do education in every way—from how we use curricula and evaluate children’s learning, to how we fund education.”

—MOLLY ROUSE-TERLEVICH, C’90, GED’00
Member, Penn GSE Board of Advisors



When Dexter D. Evans, GED’18, came to Penn GSE, he was the first student from his alma mater, Paul Quinn College, a Historically Black College, to earn a graduate degree from an Ivy League university. After earning his master’s, he returned to Paul Quinn, working under the mentorship of the college’s president, fellow Penn GSE graduate Michael J. Sorrell, GRD’15, as associate dean of students. Evans is now executive director of the FRIENDS of Barack Obama Male Leadership Academy, a nonprofit that supports the young men’s public school in Dallas, TX. A consistent donor to the Penn GSE Annual Fund, he says, “Investing in my education through Penn GSE has further bolstered my ability to make an extraordinary impact in the lives of our most deserving students. I chose to pay it forward by investing in a place that nurtured my research and discovery through an immersive graduate student experience.”

Dr. Linda Oubré, GRD’17, brought experience in the corporate world and higher education when she became president of Whittier College, which is recognized both as a Hispanic Serving Institution and a Minority Serving Institution. “As the president of one of the most diverse colleges in the United States, and a first-generation college attendee myself, I know firsthand how access to higher education transforms lives. I like to say that education has the opportunity to transform the lives not only of individual students, but also of their entire families and communities,” she says. That commitment to access and transformation inspires Oubré to donate to the Penn GSE Annual Fund. “I give to Penn GSE because my alma mater is making a difference in the lives of the students who will change the world,” she says.





Thank You!

Penn GSE's strength is catalyzed by the incredible leadership and commitment of friends and supporters who have generously supported the School with their time, service, and contributions. Thank you for all that you have done to support education and Penn GSE during the campaign. Thank you for partnering with us now and in the future.



ADVANCING
KNOWLEDGE
FOR
GOOD

EXTRAORDINARY
IMPACT
THE CAMPAIGN FOR  **PENN GSE**



Office of Development & Alumni Relations

University of Pennsylvania
Graduate School of Education
3440 Market Street, Suite 560 | Philadelphia, PA 19104
215.573.6623 | alumni@gse.upenn.edu