

▶ GSE SPACE ACQUISITIONS OVER THE PAST YEAR1

▶ JULY RELOCATION PROCESS AND SPACE MOVES5

▶ RECENT / ONGOING FACILITIES-RELATED PROJECTS9



Facilities *update*

University of Pennsylvania
Graduate School of Education

GSE CONTINUES TO GROW ITS FOOTPRINT...

Saint Leonard's Court & 3440 Market Street

Since our last newsletter, GSE has acquired office and research space at Saint Leonard's Court:

- Suite 140 is the Center for Minority Serving Institutions directed by Dr. Marybeth Gasman and her group.
- Suite 130 is the Center for the Study of Race and Equity in Education occupied by Dr. Shaun Harper and his team.
- Suite 120 serves as a home to the Higher Ed Division, the Exec Doc Program, and the AHEAD Research Center directed by Dr. Laura Perna.

In addition, 2 other organizations will soon be operational on the 5th floor of 3440 Market Street:

- Dr. Howard Stevenson, from the APHD Division, is in the process of opening a new research center, the Racial Empowerment Collaborative.
- Dr. Joe Mazza, the Leadership Innovation Manager at 3440, will be managing Mid-Career Innovation Lab's new digital podcasting studio.

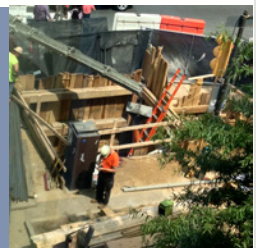


GSE 
Trivia

Why is there a big hole in the sidewalk outside of 3700 Walnut St.?

- A. Penn is extracting natural gas from shale rock layers through fracking.
- B. We are building a new office for the Director of Fiscal Operations. ☺
- C. Workers are restoring an electrical feeder / rebuilding a steam manhole.

Please Note: Answers can be found through reading our newsletter and on the last page





GSE LOCATIONS

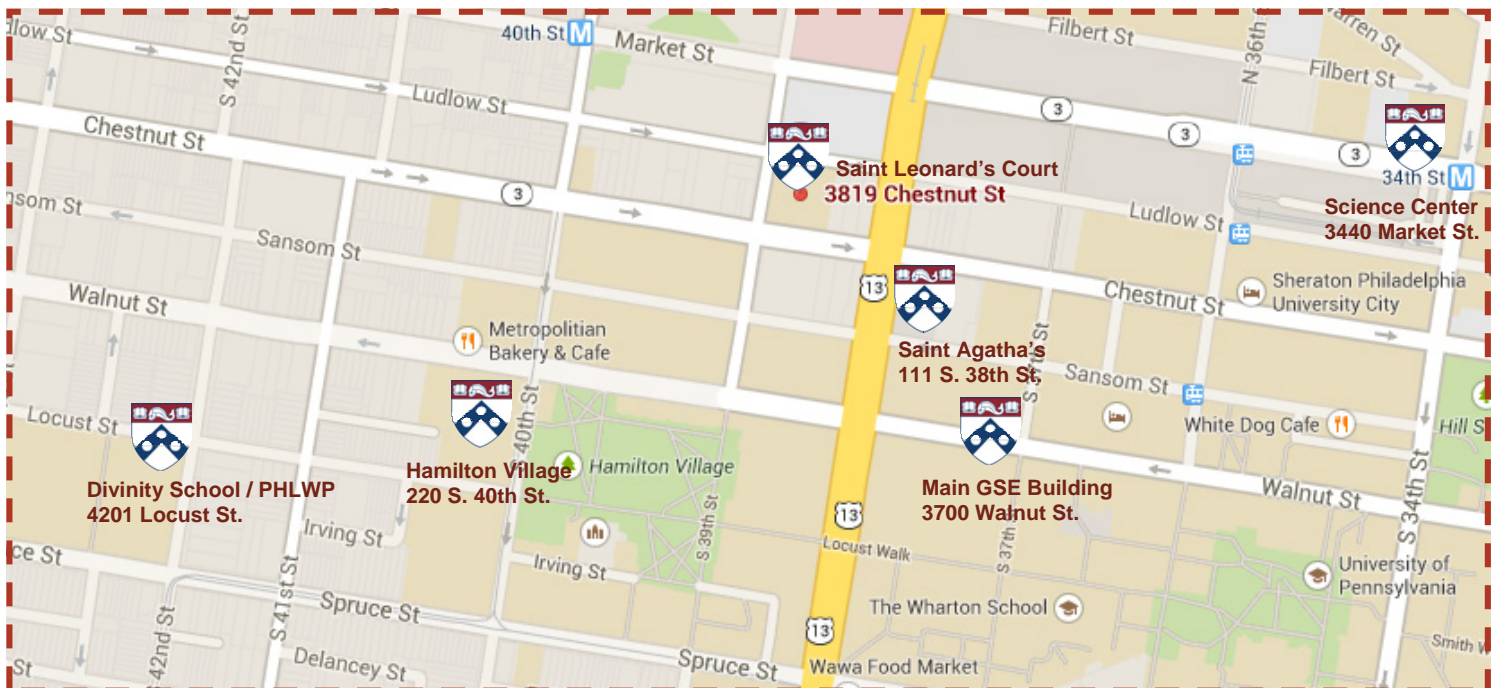
One School. Six Buildings. A Million Opportunities.

- Main Building:
3700 Walnut Street
- Saint Agatha's:
111 S. 38th Street
3rd Floor
- Science Center:
3440 Market Street
Suites 212, 500, 560
- PHLWP/Divinity School:
4201 Locust Street
- Saint Leonard's Court
3819 Chestnut Street
Suites 120, 130, 140
- Hamilton Village:
220 S. 40th Street
Suite 250



GSE ON A MAP

Leaving Our Footprints Across Campus...





Suite 140 -
Center for
Minority
Serving
Institutions



Suite 130 -
Center for
the Study of
Race and Equity
in Education



THIS SUMMER'S RELOCATION PROCESS

Per our annual summer tradition, GSE underwent space relocations ranging from new space acquisition and renovations to simply moving to an office down the hall. These projects have been broken out into several pieces in order to minimize downtime and inconveniences. Here's the scope of this summer's projects:

Who's Moving?

- The total number of 2014 moves/people affected = **53**
- Total number of individuals acquiring space in Saint Leonard's Court, Suite 120 = **21**
- A number of individuals currently located at Suite 560, 3440 Market Street, relocated to new offices within the suite. Total number of individuals affected= **14**
- We have welcomed numerous new employees this summer who, along with several existing faculty and staff members, have also been a part of the space move project. A number of individuals residing on the 2nd, 3rd, and 4th floors of 3700 Walnut Street will relocate to various offices throughout the building. Total number moving = **18**





SUITE 120, ST. LEONARD'S COURT

Details on Our Latest Space Acquisition Project

By the Numbers...

Project Start Date: 01/01/2014

Project End Date: 07/18/2014

Square Footage: 5,325 sq. ft.

of people affected: 21

of Departments/Divisions affected: 3

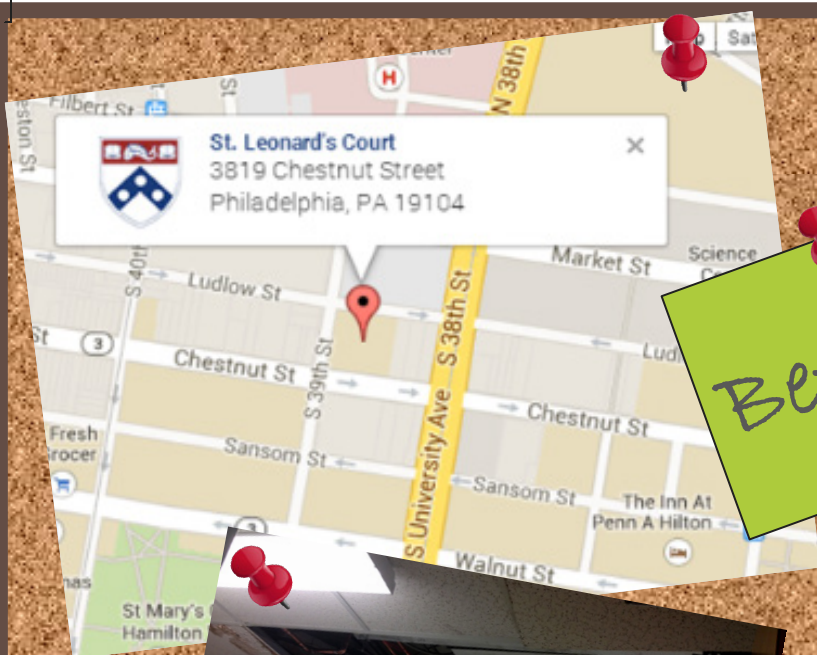
- Higher Education Division
- Executive Doctorate Program in Higher Education Management
- PennAHEAD (Alliance for Higher Education and Democracy)

of vendors involved in the occupation/renovation process: 15

- CFI - conference room, reception & student furniture
- S&S Painting - electrostatical painting of lateral files
- Arthur Jackson - cleaning & preparing of suite
- Home Depot - refrigerator & microwave
- Quench U.S.A. - hot/cold water cooler
- Metropolitan - carpet and kitchen tile
- T&N - moving of boxes & belongings
- Office Depot- miscellaneous supplies
- ISC - installation of AV & data ports
- Murano Electric - power and outlets
- Tyco - 2 entry door security swipes
- AOE - office furniture for 12 offices
- Anchor Painting - painting of suite
- Hooke - installation of all furniture
- Brennan's - 5 cubicle workstations



*St. Leonard's
Court Lobby*



Saint
Leonard's
Court
Suite 120

Before...



Saint
Leonard's
Court
Suite 120

After...



OTHER FACILITIES-RELATED PROJECTS

Construction Outside of 3700 Walnut Street

So what is going on outside of our building at 3700 Walnut Street?

Two different construction projects have been ongoing outside of the GSE building over this past summer:

The first project completed was the restoration of an electrical feeder by PECO. This feeder was replaced by a PECO sub-contractor in order to restore the street lighting in the area. The feeder had failed over the winter months, and a temporary feed was installed above ground until PECO was able to schedule a permanent repair which occurred over a three week period after graduation.

The second project that is taking place is the rebuilding of a steam manhole that was found to be structurally deficient and had outlived its useful life. This manhole is one of approximately 130 that are on campus as a part of the University's steam distribution system and one of 5 different steam manholes that have been rebuilt over the summer months. The campus steam distribution system supplies the energy for the heating and hot water systems on campus.

Rebuilding the manhole requires the excavation and demolition of all of the existing walls and roof, while also supporting and maintaining the current steam system to keep the energy flowing. The new manhole will have an expected useful life of 40 years and will provide greater reliability for the campus steam distribution system.



- A. Penn is extracting natural gas from shale rock layers through fracking.
- B. We are building a new office for the Director of Fiscal Operations. ☺
- C. Workers are restoring an electrical feeder / rebuilding a steam manhole.