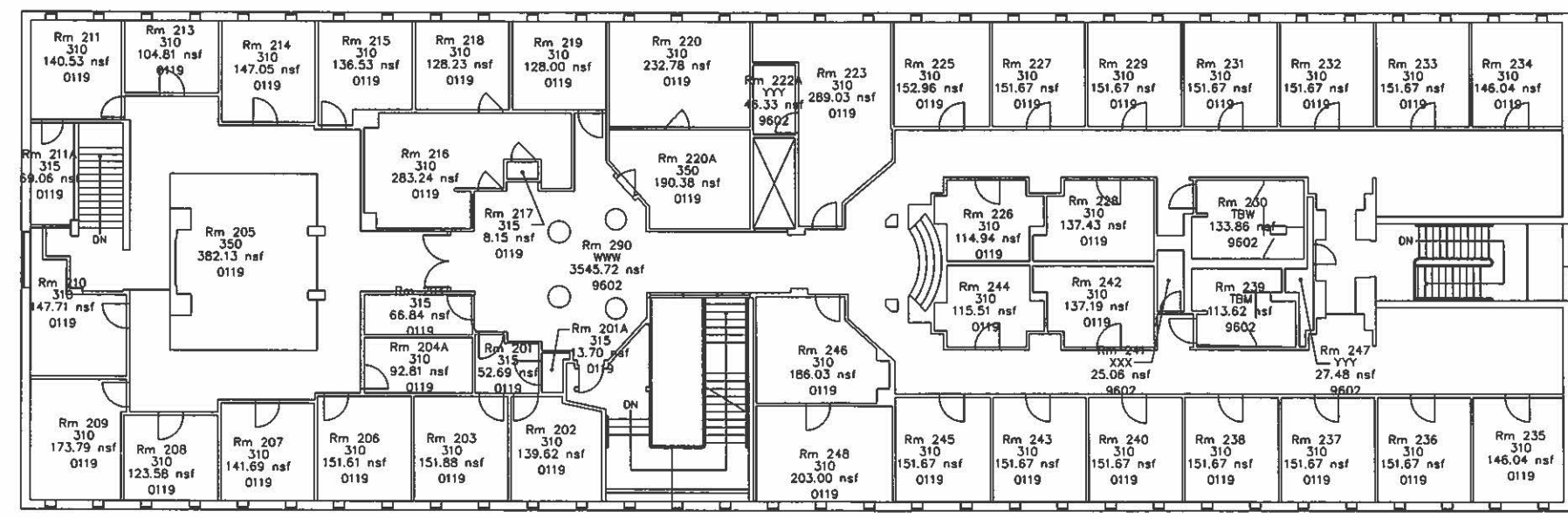


THESE MATERIALS ARE SUPPLIED BY THE UNIVERSITY OF PENNSYLVANIA DIVISION OF FACILITIES & REAL ESTATE SERVICES AS A STARTING POINT FOR MEASUREMENT AND VERIFICATION OF THE DATA PRESENTED. THE UNIVERSITY OF PENNSYLVANIA MAKES NO REPRESENTATIONS OR WARRANTIES, WHETHER EXPRESS OR IMPLIED AS TO THE ACCURACY OF INFORMATION THAT HAS BEEN SUPPLIED, WHETHER BY CAD FILES OR OTHERWISE. IT IS THE CONTRACTOR'S, ARCHITECT'S AND/OR ENGINEER'S RESPONSIBILITY TO VERIFY THE ACCURACY AND COMPLETENESS OF ALL SUPPLIED INFORMATION.

LEGEND - ROOM TAGS			
ROOM NUMBER	ARCH USE CODE	NET SQUARE FOOTAGE	ORG CODE

ORG ASSIGNMENTS MAY NOT BE CURRENT. PLEASE REQUEST UPDATED ROOM TAGS IF REQUIRED.



Building: Stiteler Hall
 Floor: Floor 2
 Usable: 6503.32 SF
 Common Area: 3892.08 SF
 Walls/Shofts/Core VP: 1431.33 SF
 Floor Gross: 11826.73 SF
 Construction Gross: 11986.67 SF

DATE	BY	DESCRIPTION
10-00-00		

DISK TYPE: CD/ZIP/3.5"

FOR PLANNING USE ONLY. DIMENSIONS MAY VARY FROM FIELD CONDITIONS.

DIVISION OF FACILITIES AND REAL ESTATE SERVICES
 310 WALNUT ST. PHILADELPHIA, PA. 19104-6289
 PHONE: 811-888-5708

UNIVERSITY OF PENNSYLVANIA



Stiteler Hall
 Second Floor

DATE:	10-00-00
SCALE:	As Noted
REVISIONS MADE:	
DATE:	11/17/01
BY:	IV
DATE:	03/13/06
BY:	CLS
DATE:	10-1-08
BY:	DRY

REVISION APPROVED:

SHEET NUMBER: A-4