



# GSE Facilities *update*

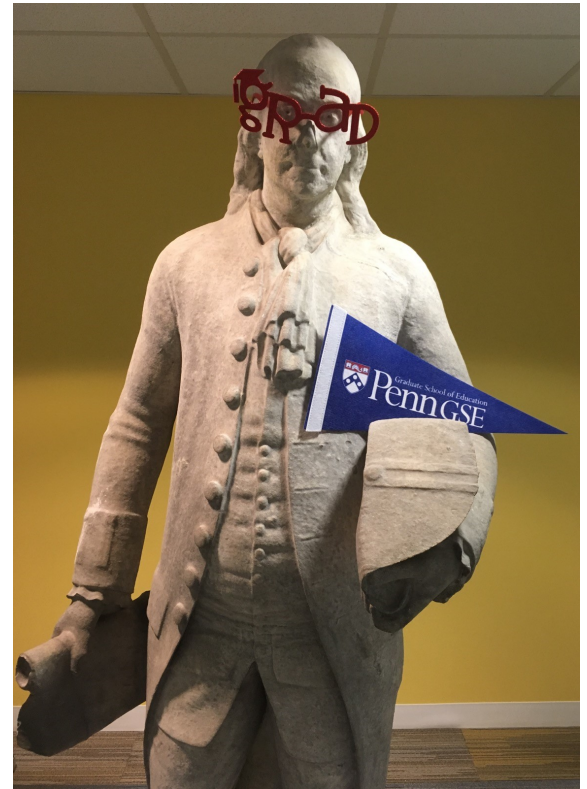
## GSE'S SUMMER PROJECTS 2018

### GSE Acquires New Space in Stiteler Hall & 3440 Market St.

We are pleased to announce that GSE has completed the acquisition and renovation of Stiteler Hall's first floor classrooms B10 (Silverstein Forum), B30 and B32 as well as office/lounge space on the second floor.

The building is located on campus and is only a few steps from our 3700 Walnut St. location!

As an important step in our space strategy, Stiteler Hall has allowed GSE to relocate the Higher Ed Division, Research Centers, and the Exec Ed programs back onto Penn's campus proper. This acquisition, along with the addition of space on the 3rd floor or 3440 Market St., expands GSE's supply of classroom/conference room meeting space.



Stiteler Hall is an example of what architectural style?

- A. Modernist
- B. Structuralist
- C. Brutalist

# GSE LOCATIONS

*Celebrating our renewed presence on campus!*



GSE Building  
3700 Walnut St

Solomon Laboratories  
3720 Walnut St

Stiteler Hall  
208 S 37th St

Science Center  
3440 Market St



## Mapping GSE's footprint...



# A SUMMER TO REMEMBER....

Summer 2018 was one of our busiest summers to date! Moves took place across multiple locations which involved 61 individuals.

In early May, GSE acquired space on the third floor of 3440 Market St. in the space adjoining Penn Literacy Network (PLN).

In early July, the School of Arts and Sciences officially turned over the keys to Stiteler Hall and GSE started renovations of the second floor on July 2nd.

## **Phase I— 3440 Market St., Suite 370 (5/1—5/29)**

- New paint and carpet
- Improved lighting
- New lobby furniture
- Kitchen renovation

## **Phase II— Stiteler Hall Renovations (7/1 - 8/15)**

⇒ 1st Floor Conference Rooms

- New paint and carpet
- New modular furniture with moveable chairs/tables
- New AV equipment

⇒ 2nd Floor faculty, staff and student space

- Redesigned floor space
- Enhanced lighting
- New student lounge and meeting space
- New kitchenette
- New paint and carpet
- New furniture
- Security improvements



# 3440 Market Street

## *Suite 370*



**Project Start Date:** April 2018

**Project End Date:** May 2018

**# of offices:** 26

**# of hoteling spaces**

5 private single offices

1 shared office—3 desks

**# of conference rooms:** 2

- Room # 356 - occupancy 12

- Room # 372 - occupancy 10

**Mailing Address:**

3440 Market Street, Suite 370

Philadelphia, PA, 19104

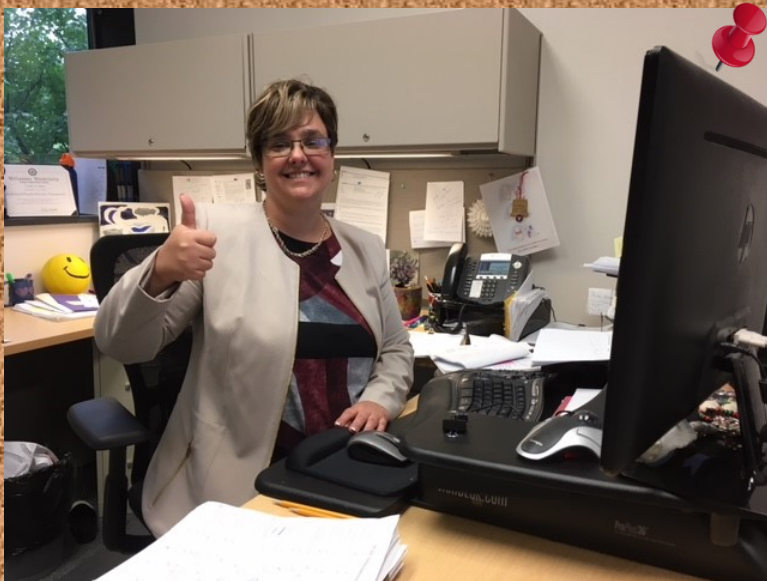
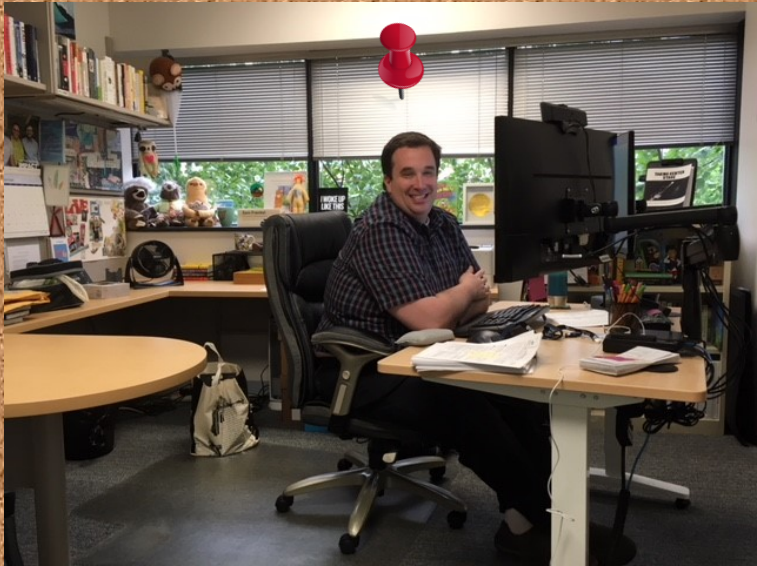
**Departments/Programs**

- GSE Business Office
  - HR
  - Payroll
  - Payment Processing
  - Sponsored Program Mgmt.
- GSE Films
- Penn Literacy Network (PLN)

**Research Centers**

- APHD Research

Welcome  
to Suite 370  
@  
3440 Market Street



# 208 S. 37th Street

## *Stiteler Hall*



The Ben statue is protected with a plywood box during construction.



It's moving day...PhD cubes and south lounge prior to move-in.



Here come the movers!



**Project Start Date:** July 2018  
**Project End Date:** August 2018

**# of offices:** 33

**# of hoteling spaces:** 6

- 1 private single office
- 3 shared offices

**# of conference rooms:** 3

- Room B10-occupancy 40
- Room B30-occupancy 27
- Room B32-occupancy 24

**Mailing Address:** 208 S. 37th Street  
Philadelphia, Pennsylvania, 19104

### **Departments/Programs**

- Higher Ed Division
- Educational Entrepreneurship
- Exec Doc
- CLO
- Med Ed
- Mid Career
- School Leadership
- SMHC

### **Research Centers**

- CMSI
- Penn AHEAD

**Stiteler  
Hall  
BEFORE**



**Stiteler Hall  
AFTER**





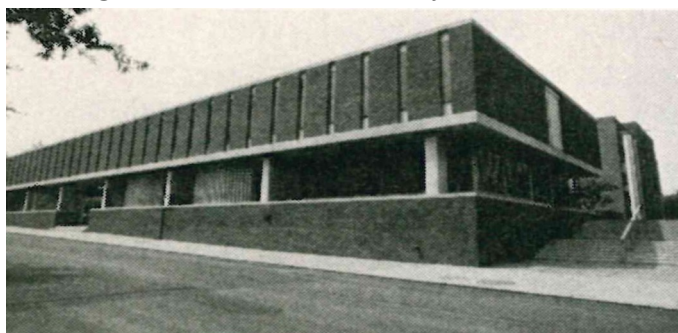
# Hidden in Plain Sight –

## How a statue of Benjamin Franklin was lost & found again

To any visitor walking through Penn's campus, it becomes clear that the University has something of a soft spot for its beloved founder Benjamin Franklin. From Locust Walk's *Ben on a Bench* to the statue of Benjamin Franklin standing in front of College Hall to the quotes that line 37<sup>th</sup> street between Spruce and Walnut, Ben is everywhere.

The vast Benjamin Franklin art collection has been documented repeatedly. However, when GSE reached out to Penn's Campus Art Curators, they had no record of the Benjamin Franklin statue located in Stiteler Hall. This is the story of a statue of Benjamin Franklin that Penn forgot.

Along 37<sup>th</sup> Street between Locust Walk and Walnut Street lies Stiteler Hall (*Stite-ler*), a **brutalist** building of the mid 20th century.



When Stiteler Hall was built in 1966 by architects Livingston and Larson, the second floor consisted of small classrooms that broke out from a long central corridor. In 1980, the University hired the firm, Voorsanger and Mills to transform the second floor classrooms into offices for the political science department. At the center of the remodeled floor was a statue of Benjamin Franklin. Thus began Ben's 38 year watch over the Political Science Department of the School of Arts and Sciences.

Correspondence with architect Edward I. Mills revealed the origin of this forgotten statue of Ben. The statue previously stood in a cemetery at 24th and Diamond St. in North Philadelphia. The cemetery was razed in 1951 to build housing projects.

If you look very carefully at the bottom of the statue, you can see a very faint artists name. The marble statue was created by John T. Battin who was born in England in 1805 and immigrated to New York sometime before 1849. Records of the statue date back to 1884.



# GSE

## *Hoteling Space*

Have a faculty member visiting campus and you don't want to send them to the library?

Need a touchdown space for an adjunct professor teaching a Tuesday night class?

Need a breakout room for your cohort?



### **GSE now has Hoteling Space!**

Individual and shared office space is available on 2nd floor Stiteler Hall and 3rd & 5th floors of 3440 Market Street

(Please reach out to Terence (Stiteler Hall) and Tony (3440 Market St.) in order to reserve your space.)



Private Hoteling Space 3440  
Suite 370



Private Hoteling at Stiteler Hall

# GSE Space

## *Conference Rooms*

### 3440 Market Street, Suite 370:

- **Room 356** - Technology: Computer, Flat Screen Monitor, Solstice (Wireless content sharing), Web Video Conferencing
- **Room 372** - Technology: Computer, Flat Screen Monitor, Solstice (Wireless content sharing), Web Video Conferencing



### Stiteler Hall 1st Floor:

- **Silverstein Forum (B10)** - Technology: Computer, Dual Flat Screen Monitors, Solstice (Wireless content sharing), Web Video Conferencing
- **Rooms B30 and B32** - Technology: Computer, Projector (B30) Computer, Flat Screen Monitor, Solstice (Wireless content sharing), Web Video Conferencing (B32)



# GSE Café

*Partners with Avenue C*

## New GSE Café Now Open!



- Located on the first floor of 3700 Walnut St.
- Open 7 days a week, 24 hours a day!
- Featuring a large selection of fresh food, microwaveable meals and beverages, including Peet's coffee.
- Self-checkout Café System
- Did we mention ice cream??



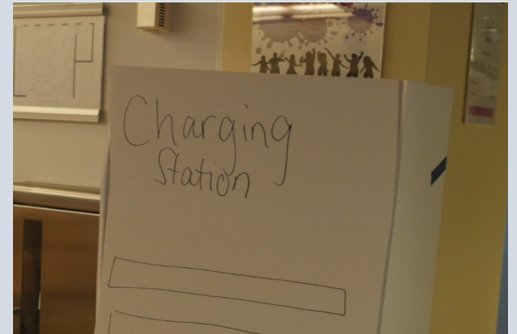
# 3700 Walnut Street

## *1st Floor Redesign*

### **Fresh New Look!**

#### **More Welcoming to Visitors**

- Vibrant Penn-proud welcome mats
- Coming soon:
  - New lobby furniture
  - Murals
  - Artwork



#### **Increase Collaboration and Productivity Across Groups**

- Computer Lounge:
  - Small group meeting area w/ whiteboard
  - New “comfy” window cushions
  - Wireless printing capability
- Lobby charging station
- Additional charging outlets in student lounge

*Improvement recommendations compliments of the Design Thinking Challenge.*



Welcome to the redesigned 1st floor @ 3700 Walnut St.



## *Facilities Updates*

**Please visit our updated website!**

<https://www.gse.upenn.edu/facilities>

- List of all new and existing classrooms / conference rooms
- Room occupancy
- IT equipment details
- Updated room reservations request forms
- Departmental location by building
- Floor plans
- Hours of operation



*Thanks to the web design team and communications for making this possible!*

## **3700 Walnut HVAC System Upgrade**



Our temperamental air conditioning system has finally met it's match!

Facilities renewal funds totaling \$600K are being spent to digitalize all system controls and valves. GSE faculty, staff and students will finally be able to shed their sweaters in the summer and turn off their space heaters in the winter!

The project which began in May is scheduled to be completed in October 2018.

# GSE Space Management

## *Additional Information*

- Additional relocation questions?  
Please contact Tracy Bateman at [gse-relocation@gse.upenn.edu](mailto:gse-relocation@gse.upenn.edu)
- For 3700 Walnut St. or Stiteler Hall facility management questions?  
Please contact Terence Newby at [tnewby@upenn.edu](mailto:tnewby@upenn.edu)
- For 3440 Market St. or Solomon Hall facility management questions?  
Please contact Tony Delgozzo at [tonydel@upenn.edu](mailto:tonydel@upenn.edu)
- For questions concerning future projects?  
Please contact Jason Presley at [jpresley@gse.upenn.edu](mailto:jpresley@gse.upenn.edu)  
or Greg Tausz at [tauszg@upenn.edu](mailto:tauszg@upenn.edu)

